

## NEWLY REPORTED POSITIVE COVID-19 CASES AND DEATHS OF COVID-19-POSITIVE CONSUMERS

Data provided by regional centers as of 11/21/20.

## Table of Contents

<b>Figure 1. Number of consumers newly reported as COVID-19 positive, by week .....</b>	<b>2</b>
<b>Figure 2. Number of consumers newly reported as COVID-19 positive, by week and residence type .....</b>	<b>2</b>
<b>Table 1. Number of consumers reported as COVID-19 positive, by week and residence type .....</b>	<b>3</b>
<b>Table 2. Number of consumers reported as COVID-19-positive, by residence type, 11/20/20 .....</b>	<b>4</b>
<b>Table 3. Number of deaths of consumers who tested positive for COVID-19, by residence type, 11/20/20 .....</b>	<b>4</b>
<b>Table 4. Number of deaths of consumers who tested positive for COVID-19, by ethnicity, 11/20/20 .....</b>	<b>5</b>
<b>NUMBER OF CONSUMERS NEWLY REPORTED AS COVID-19 POSITIVE, BY WEEK AND REGION .....</b>	<b>5</b>
<b>Figure 3. Northern CA excluding the Bay Area .....</b>	<b>5</b>
<b>Figure 4. Bay Area .....</b>	<b>6</b>
<b>Figure 5. Central CA .....</b>	<b>6</b>
<b>Figure 6. Southern CA excluding Los Angeles .....</b>	<b>7</b>
<b>Figure 7. Los Angeles .....</b>	<b>7</b>
<b>Table 5. Number of consumers reported as COVID-19 positive per 10,000 consumers, by regional center, 11/20/20 .....</b>	<b>8</b>

These tables and charts compile data provided to DDS by California's 21 regional centers (RCs). Updates received from each regional center every business day include information for individuals known to them to have tested positive for COVID-19; data is provisional and may change as regional centers provide updates. Weekly data reflects RC reports through Saturday for weeks that start on the previous Sunday. DDS implemented a surveillance data tracking tool on 3/16/20, and this report begins the week of March 15, 2020. (Governor Newsom declared a State of Emergency related to COVID-19 on 3/4/20.)

Figure 1. Number of consumers newly reported as COVID-19 positive, by week

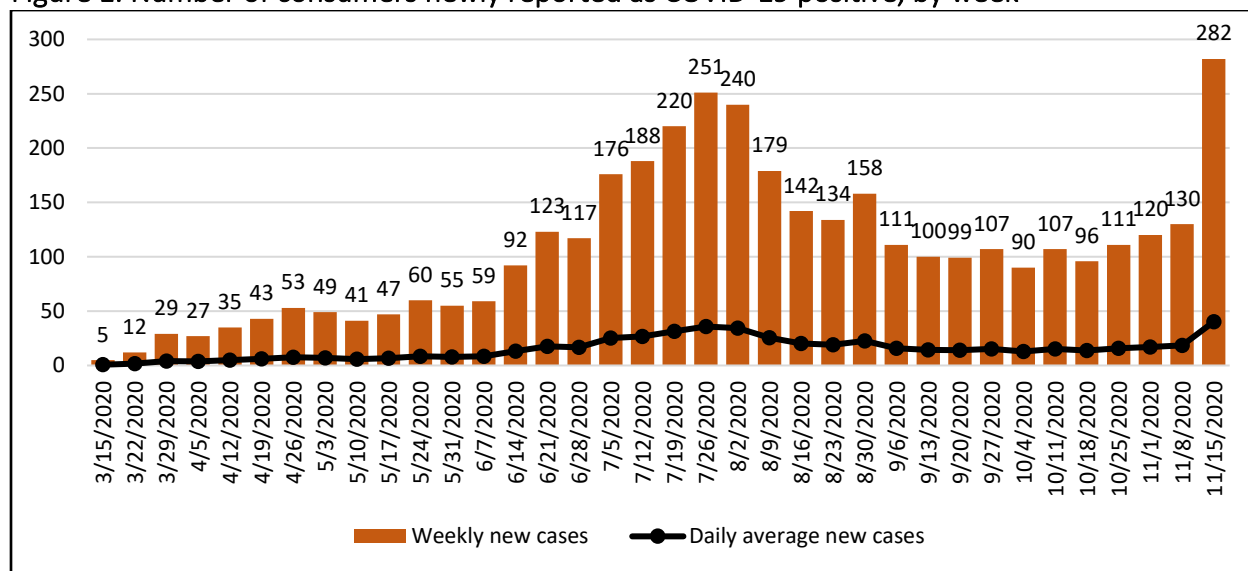
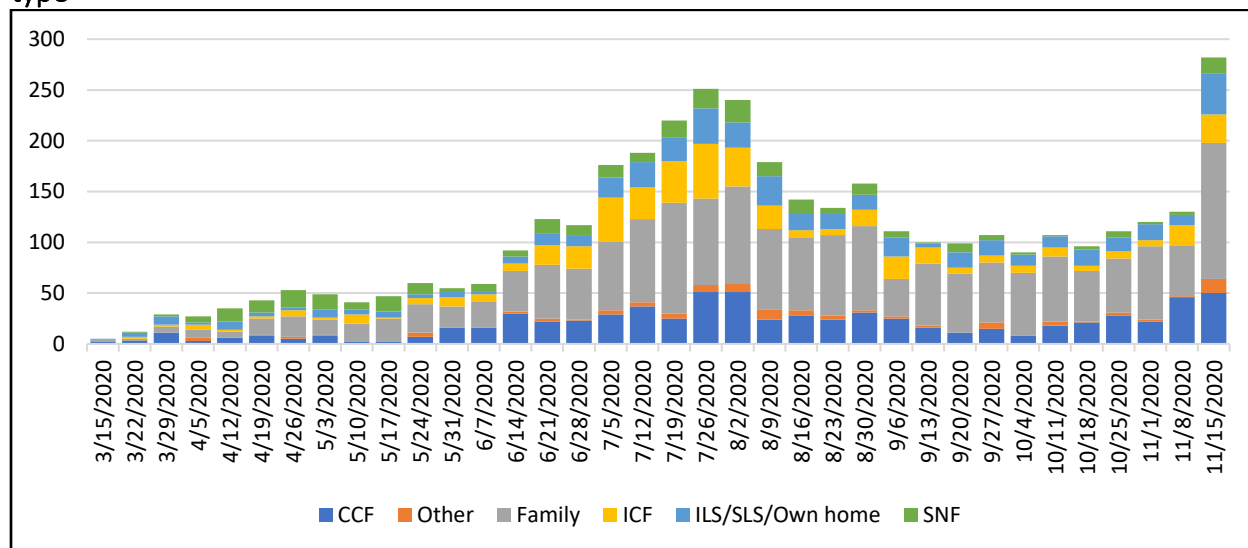


Figure 2. Number of consumers newly reported as COVID-19 positive, by week and residence type



Notes: CCF includes ARF, ARFPSHN, CCH, CCF-Level 3S/4I/113, RCFE, SRF; ICF includes ICF/DD-H, ICF/DD-N and ICF-DD. Family includes family, parent's home, group home, FFA, FHA; Other includes county child welfare placement, jail, homeless, hospital, EBSH, and state-operated facilities. Consumers categorized in ILS may live with families or independently. COVID-19 positive cases in state-operated facilities were added to the data starting with the week of 11/15/2020 - 11/21/2020.

Table 1. Number of consumers reported as COVID-19 positive, by week and residence type

Week of	CCF	Other	Family	ICF	ILS/SLS/Own home	SNF	Total
3/15/2020	*	0	*	0	*	0	*
3/22/2020	*	0	*	*	*	*	**
3/29/2020	11	0	*	*	*	*	29
4/5/2020	*	*	*	*	*	*	27
4/12/2020	*	0	*	*	*	13	35
4/19/2020	*	*	16	*	*	12	43
4/26/2020	*	*	20	*	*	17	53
5/3/2020	*	*	15	*	*	15	49
5/10/2020	*	0	18	*	*	*	41
5/17/2020	*	0	23	*	*	15	47
5/24/2020	*	*	28	*	*	11	60
5/31/2020	16	0	21	*	*	*	55
6/7/2020	16	0	26	*	*	*	59
6/14/2020	30	*	40	*	*	*	92
6/21/2020	22	*	53	19	**	14	123
6/28/2020	23	*	50	22	11	*	117
7/5/2020	29	*	68	43	20	**	176
7/12/2020	37	*	82	31	25	*	188
7/19/2020	25	*	109	41	23	**	220
7/26/2020	51	*	85	54	35	**	251
8/2/2020	51	*	96	38	25	**	240
8/9/2020	24	*	79	23	29	**	179
8/16/2020	28	*	72	*	17	13	142
8/23/2020	24	*	79	*	15	*	134
8/30/2020	31	*	83	16	15	**	158
9/6/2020	25	*	37	22	19	*	111
9/13/2020	16	*	61	16	*	*	100
9/20/2020	*	0	58	*	15	*	99
9/27/2020	15	*	59	*	15	*	107
10/4/2020	*	0	62	*	11	*	90
10/11/2020	18	*	64	*	11	*	107
10/18/2020	21	*	50	*	16	*	96
10/25/2020	28	*	53	*	14	*	111
11/1/2020	22	*	72	*	16	*	120
11/8/2020	46	*	50	20	*	*	130
11/15/2020	50	14	134	28	40	16	282
<b>Total</b>	<b>724</b>	<b>101</b>	<b>1787</b>	<b>493</b>	<b>466</b>	<b>317</b>	<b>3,888</b>

\* In accordance with DDS Data De-Identification Guidelines, counts of one through ten have been suppressed. \*\* In accordance with DDS Data De-Identification Guidelines, complementary cells have been suppressed to prevent re-identification.

Table 2. Number of consumers reported as COVID-19-positive, by residence type, 11/20/20

RESIDENCE TYPE	NUMBER OF CONSUMERS REPORTED AS HAVING TESTED POSITIVE FOR COVID-19	THIS GROUP AS A SHARE OF ALL CONSUMERS REPORTED AS COVID-19 POSITIVE	FOR COMPARISON: NUMBER OF CONSUMERS AT ALL REGIONAL CENTERS	FOR COMPARISON: THIS GROUP AS A SHARE OF ALL CONSUMERS
Community Care Facility (CCF)	734	19%	22,820	6%
ICF for the Developmentally Disabled (ICF/DD)	105	3%	541	0%
ICF/DD-Habilitative (ICF/DD-H)	240	6%	3,711	1%
ICF/DD-Nursing (ICF/DD-N)	148	4%	2,154	1%
Family Home Agency (FHA)	21	1%	1,615	0%
Supported Living Services (SLS)	230	6%	9,286	3%
Independent Living Services (ILS)	183	5%	17,685	5%
Family	1,765	45%	287,767	81%
Own home	53	1%		
Skilled Nursing Facility (SNF)	317	8%	1,017	0%
State-Operated Facilities	21	1%	253	0%
Other	71	2%	8,449	2%
<b>Total</b>	<b>3,888</b>	<b>100%</b>	<b>355,298</b>	<b>100%</b>

Table 3. Number of deaths of consumers who tested positive for COVID-19, by residence type, 11/20/20

RESIDENCE TYPE	NUMBER OF CONSUMERS	THIS GROUP AS A SHARE OF ALL DECEASED CONSUMERS REPORTED AS COVID-19 POSITIVE	FOR COMPARISON: NUMBER OF CONSUMERS AT ALL REGIONAL CENTERS	FOR COMPARISON: THIS GROUP AS A SHARE OF ALL CONSUMERS
Community Care Facility (CCF)	28	15%	22,820	6%
ICF for the Developmentally Disabled (ICF/DD)	*	*	541	0%
ICF/DD-Habilitative (ICF/DD-H)	15	8%	3,711	1%
ICF/DD-Nursing (ICF/DD-N)	15	8%	2,154	1%
Family Home Agency	0	0%	1,615	0%
Supported Living Services (SLS)	15	8%	9,286	3%
Independent Living Services (ILS)	*	*	17,685	5%
Family	34	18%	287,767	81%
Own Home	*	*		
Skilled Nursing Facility (SNF)	64	34%	1,017	0%
State-Operated Facilities	0	0%	253	0%
Other	*	*	8,449	2%
<b>Total</b>	<b>188</b>	<b>100%</b>	<b>355,298</b>	<b>100%</b>

\* In accordance with DDS Data De-Identification Guidelines, counts of one through ten have been suppressed.

Table 4. Number of deaths of consumers who tested positive for COVID-19, by ethnicity, 11/20/20

CONSUMER CHARACTERISTICS	NUMBER OF DEATHS IN CONSUMERS REPORTED AS HAVING TESTED POSITIVE FOR COVID-19	THIS GROUP AS A SHARE OF ALL DEATHS IN CONSUMERS REPORTED AS COVID-19 POSITIVE	FOR COMPARISON: NUMBER OF CONSUMERS AT ALL REGIONAL CENTERS	FOR COMPARISON: THIS GROUP AS A SHARE OF ALL CONSUMERS
Asian	*	*	33,216	9%
Black/African American	24	13%	30,392	9%
Hispanic	56	30%	141,714	40%
Other <sup>1</sup>	*	*	44,516	13%
White	96	51%	105,460	30%
<b>Total</b>	<b>188</b>	<b>100%</b>	<b>355,298</b>	<b>100%</b>

<sup>1</sup> "Other" includes multiple ethnicities and individuals with no recorded ethnicity.

\* In accordance with DDS Data De-Identification Guidelines, counts of one through ten have been suppressed.

## NUMBER OF CONSUMERS NEWLY REPORTED AS COVID-19 POSITIVE, BY WEEK AND REGION

Figure 3. Northern CA excluding the Bay Area

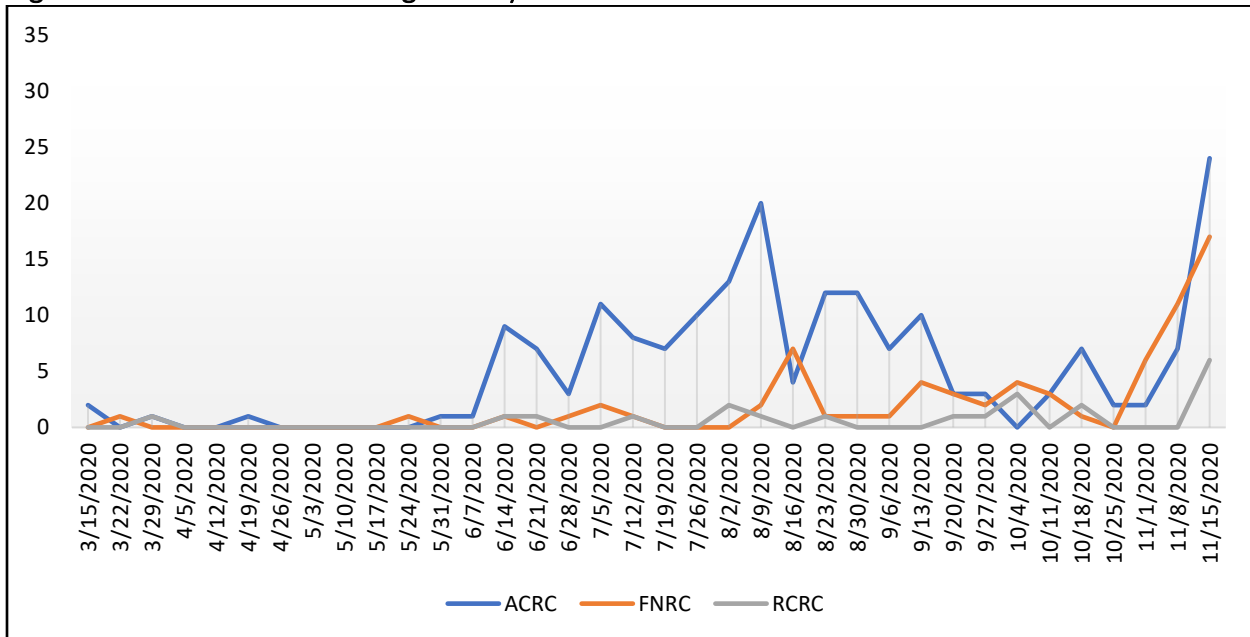


Figure 4. Bay Area

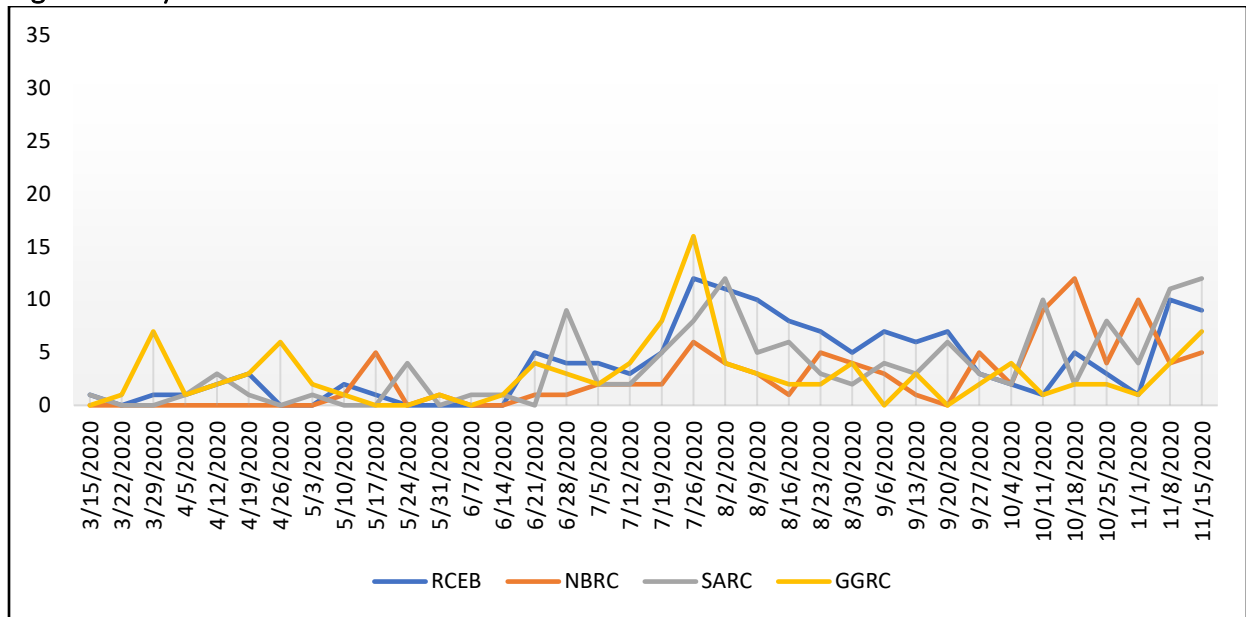


Figure 5. Central CA

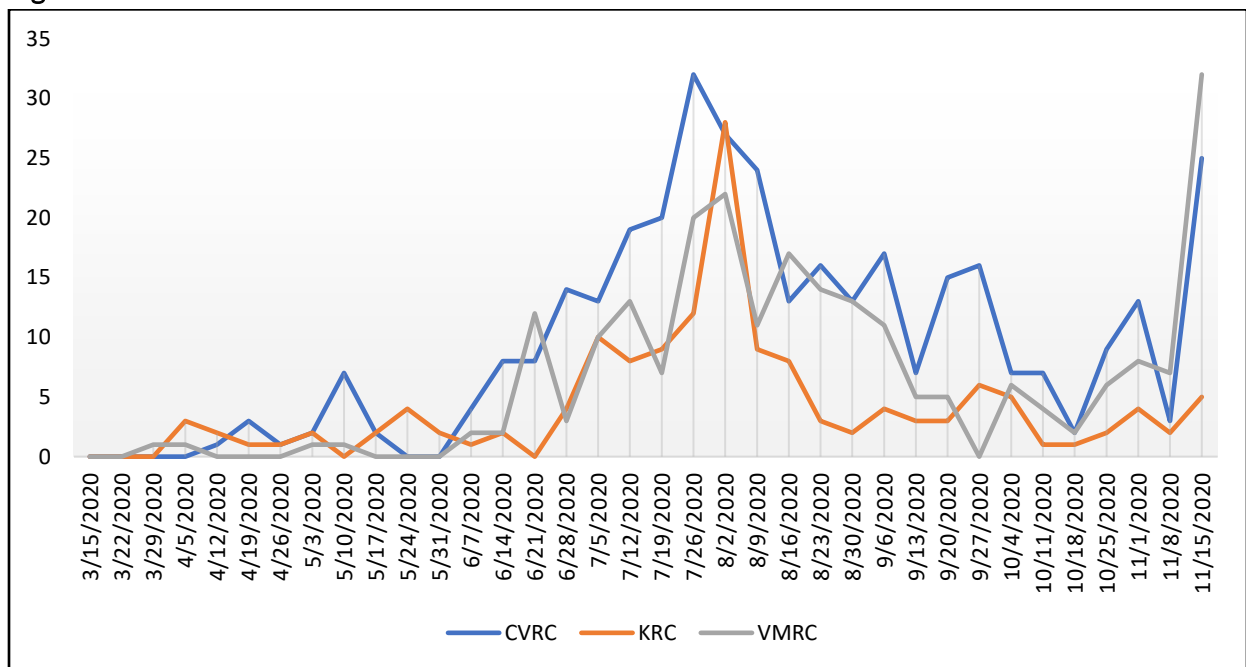


Figure 6. Southern CA excluding Los Angeles

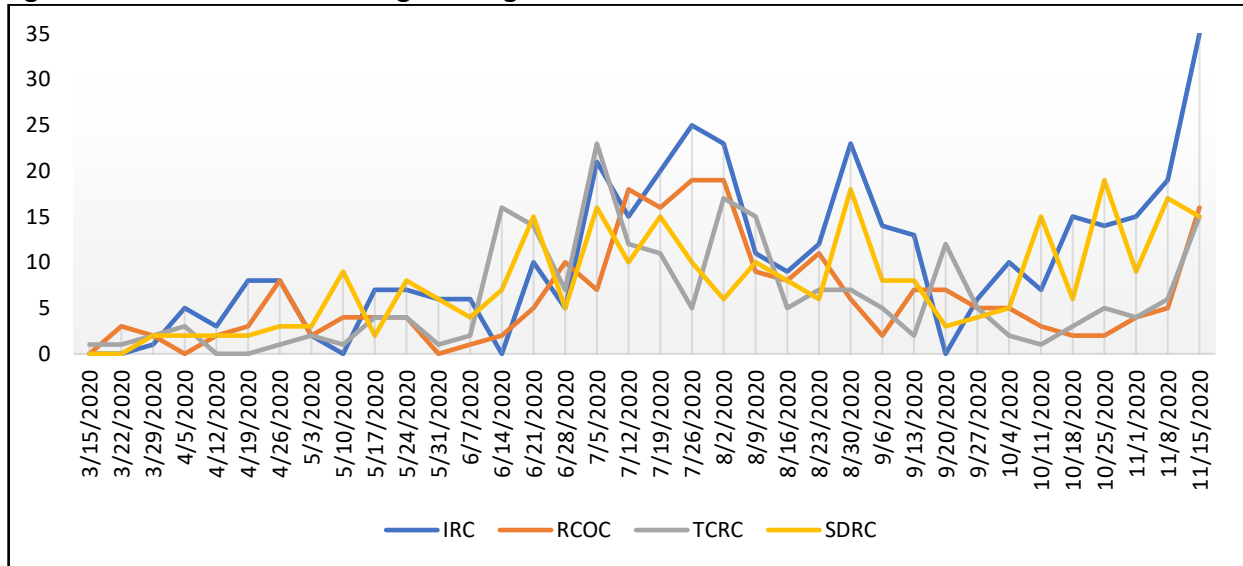


Figure 7. Los Angeles

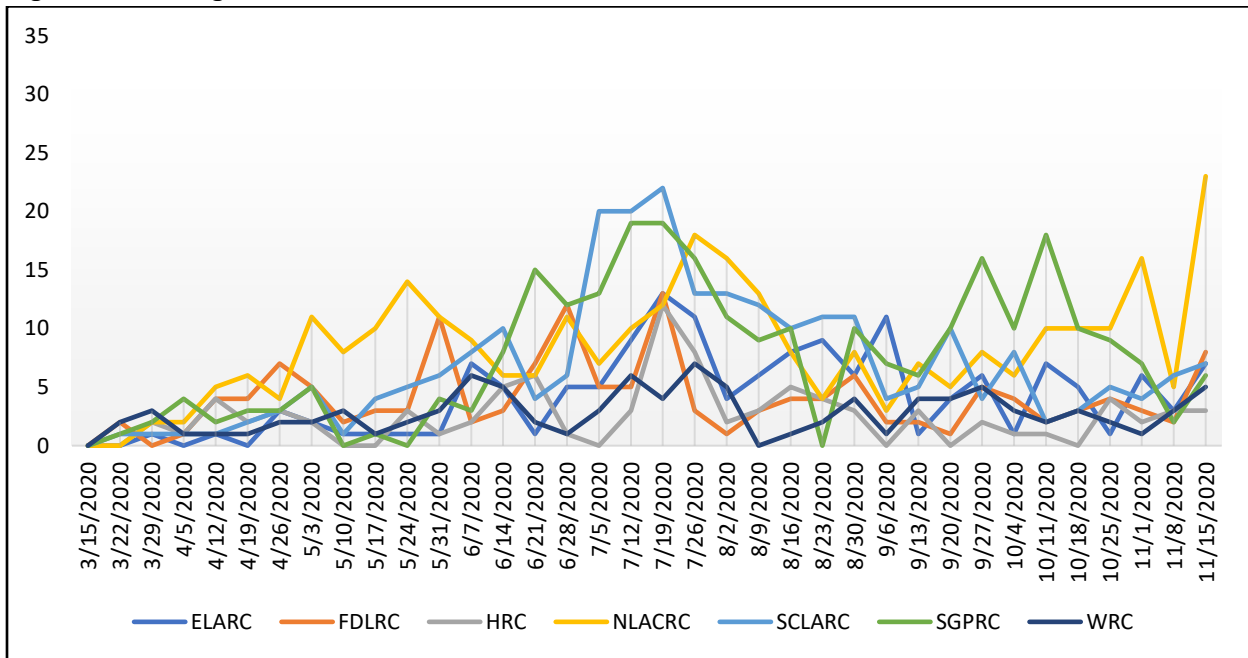


Table 5. Number of consumers reported as COVID-19 positive per 10,000 consumers, by regional center, 11/20/20

REGIONAL CENTER	NUMBER OF CONSUMERS REPORTED AS COVID-19 POSITIVE	TOTAL NUMBER OF CONSUMERS AT THIS REGIONAL CENTER	PER 10,000 CONSUMERS
SGPRC	271	13,686	198.0
CVRC	348	21,540	161.6
VMRC	236	15,426	153.0
KRC	149	10,122	147.2
TCRC	221	15,251	144.9
SCLARC	248	17,648	140.5
FDLRC	146	10,814	135.0
ELARC	152	12,410	122.5
NLACRC	304	26,741	113.7
WRC	100	9,148	109.3
GGRC	103	9,447	109.0
NBRC	93	9,147	101.7
RCOC	221	22,309	99.1
IRC	375	38,412	97.6
SDRC	278	31,845	87.3
FNRC	70	8,063	86.8
SARC	132	17,369	76.0
ACRC	190	25,497	74.5
RCEB	139	21,552	64.5
HRC	91	14,876	61.2
RCRC	21	3,995	52.6
<b>Total</b>	<b>3,888</b>	<b>355,298</b>	<b>109.4</b>

Source: DDS analysis of COVID-19 surveillance data provided by regional centers as of 11/16/20 and Client Master File data as of October 2020.