



# 2ND ANNUAL CLASP PROVIDER CONFERENCE

---

“Vision 2020”

November 5, 2020

Nancy Bargmann, Director

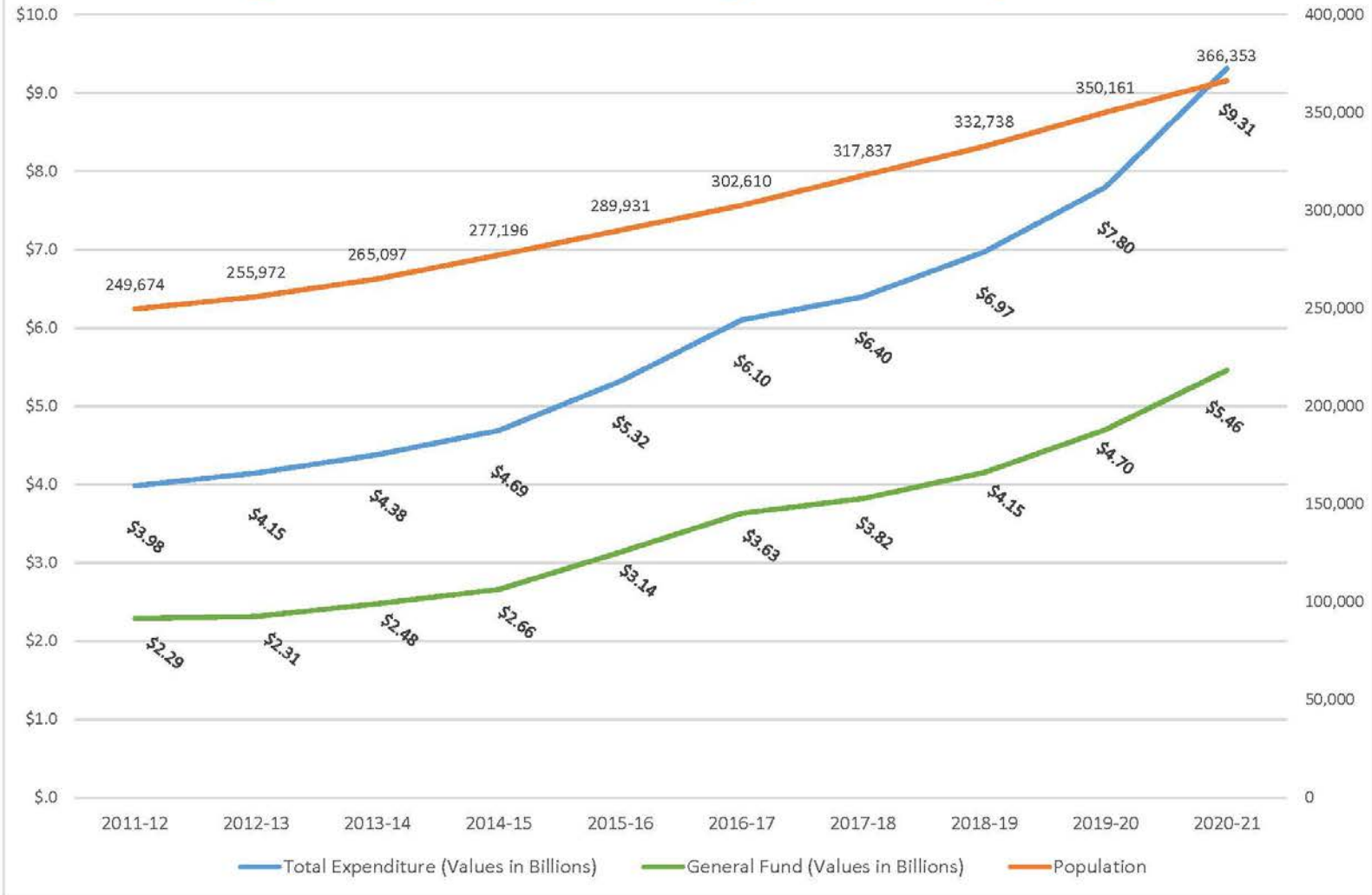
Department of Developmental Services



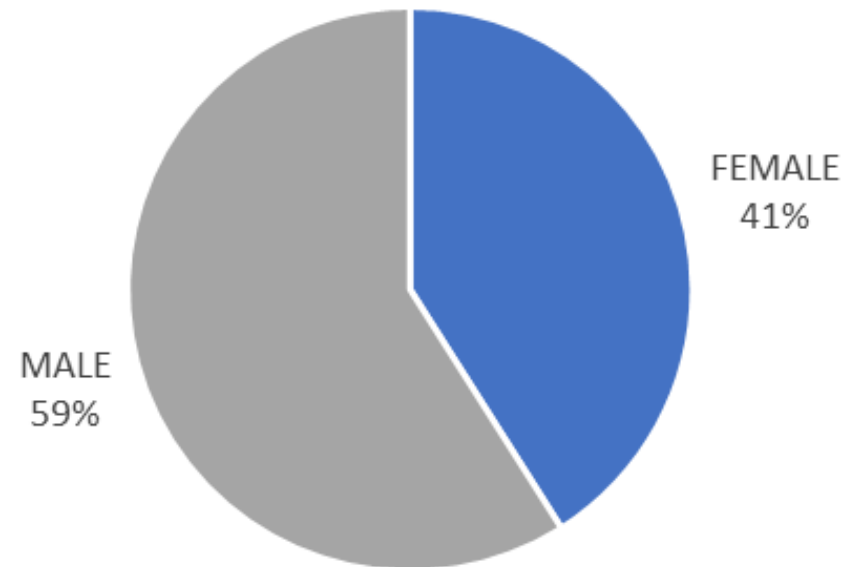
# DEVELOPMENTAL SERVICES — 2020

- Closure of the last remaining DCs
- Expansion of Safety Net services
- Service Access and Equity
- SDP Implementation
- HCBS Compliance
- Wildfires
- Public Safety Power Shutoffs
- COVID-19
- Alternative Services

# Regional Center Budget and Population



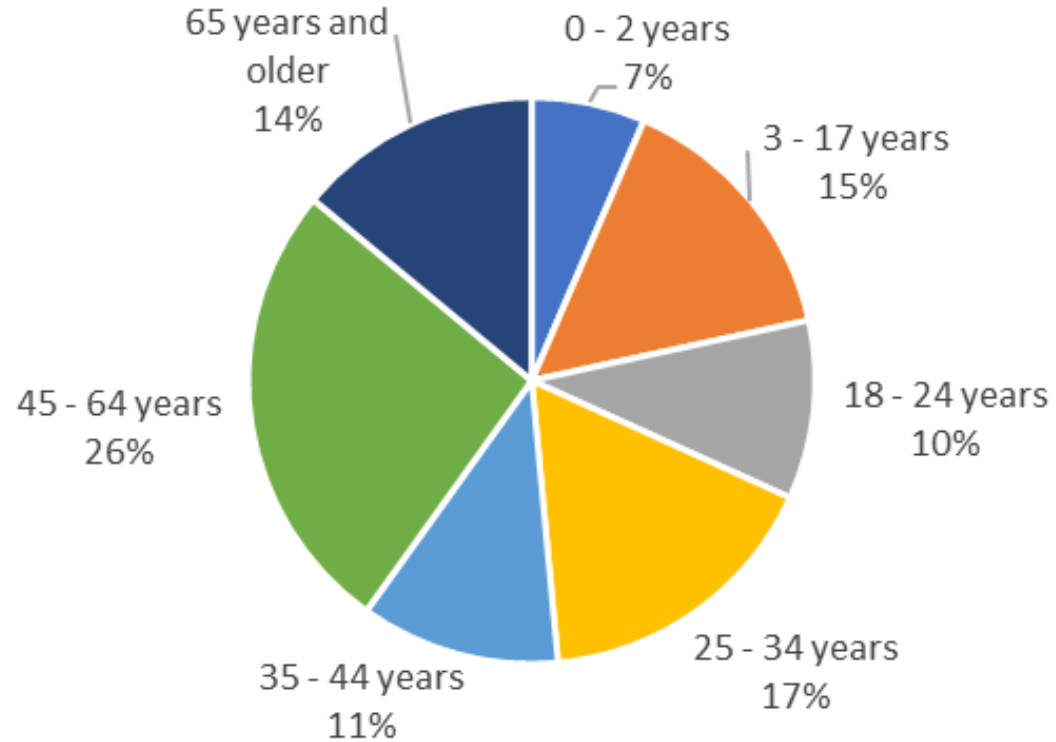
## Number of Consumers Reported as COVID-19 Positive by Gender



# STATEWIDE COVID-19 CASES

Total=3,349 (Note: Two consumers do not have a listed gender) - As of 10/30/2020

## Number of Consumers Reported as COVID-19 Positive by Age Group

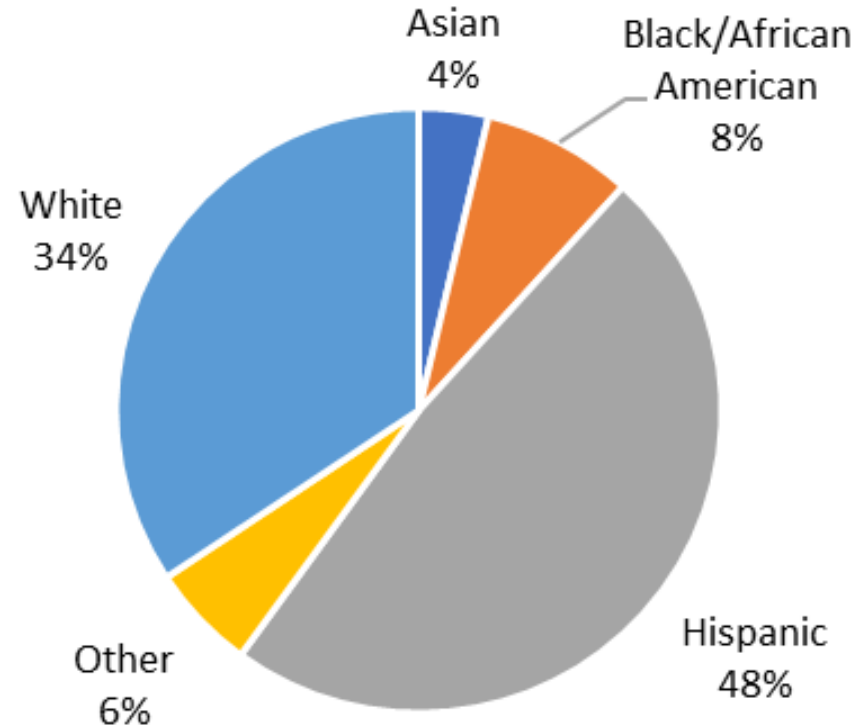


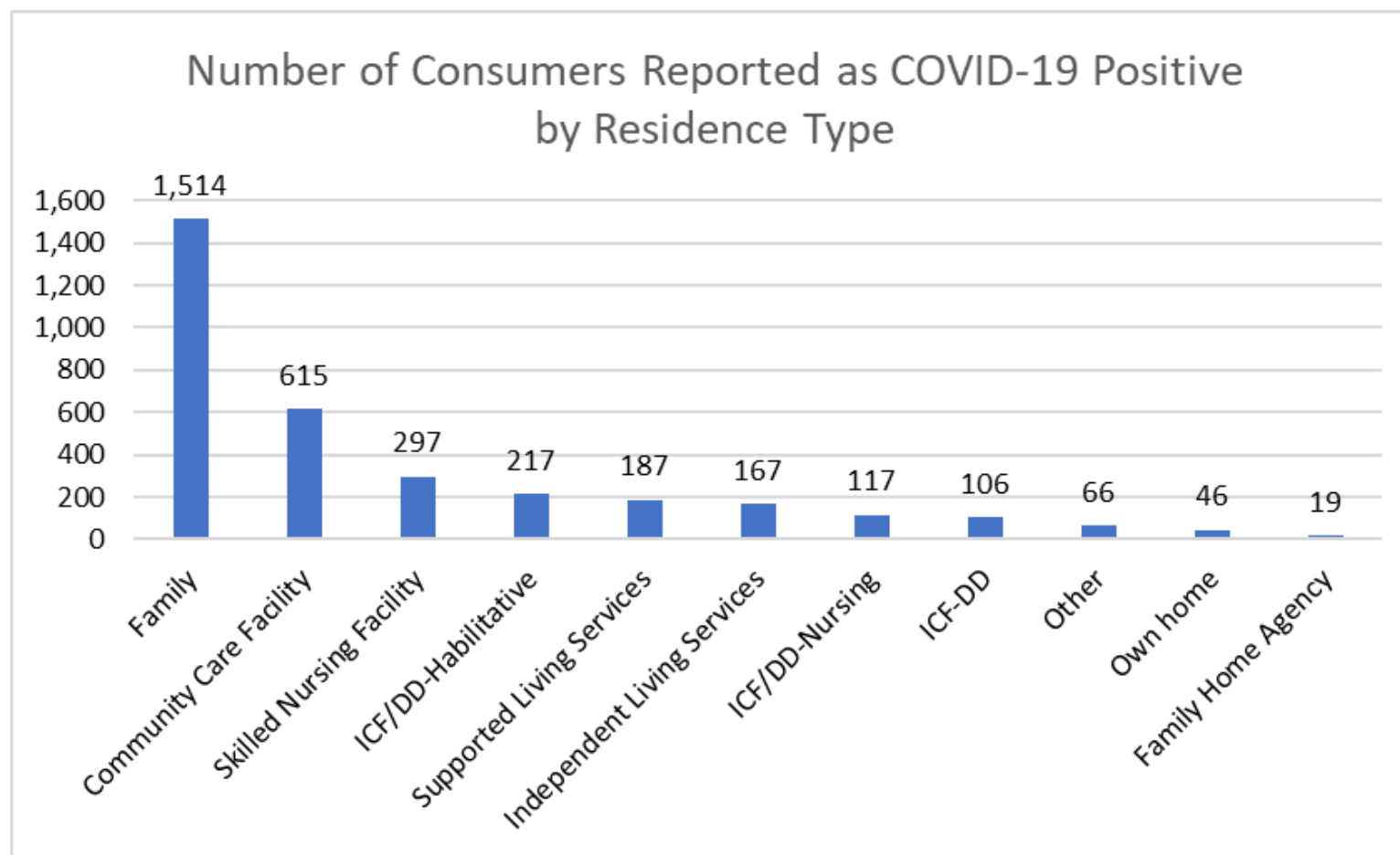
Total=3,351

# STATEWIDE COVID-19 CASES

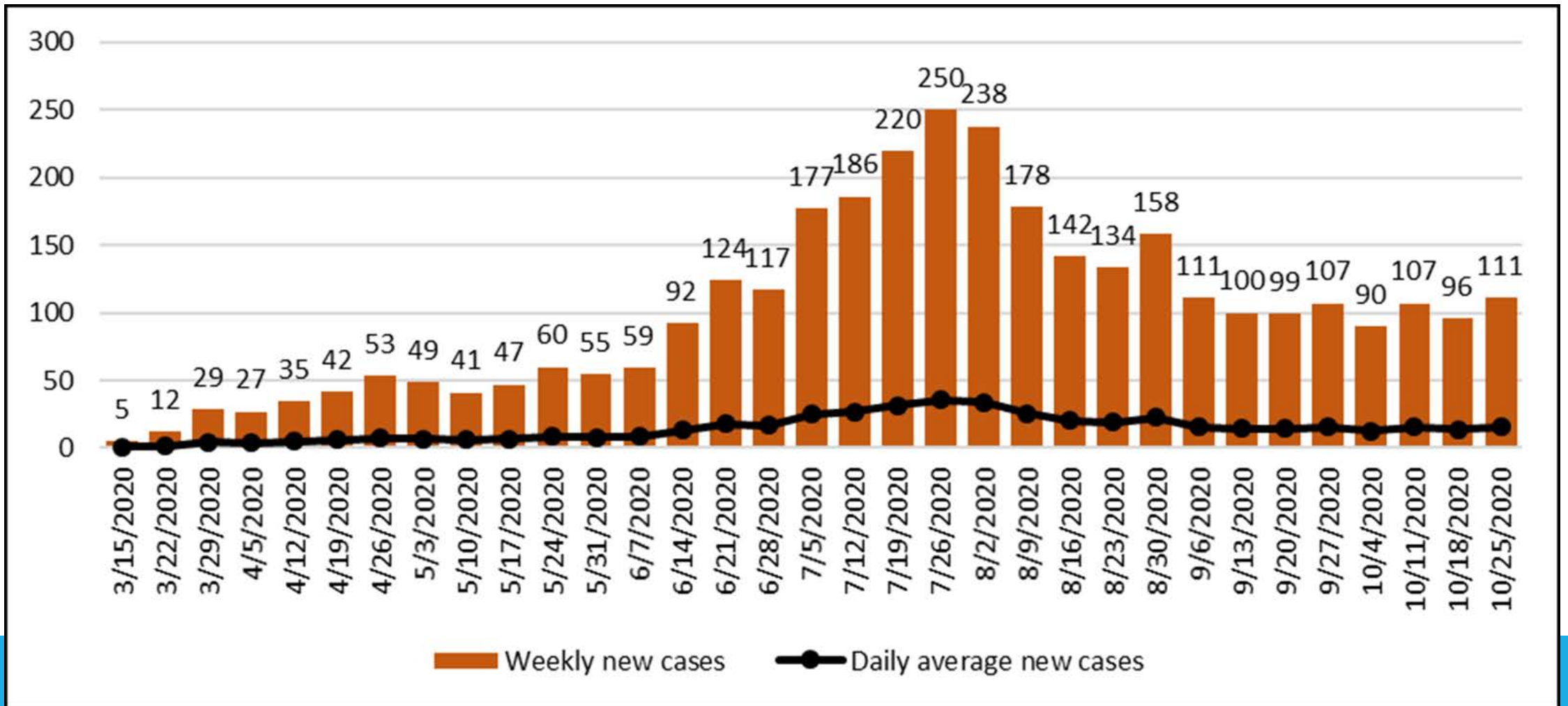
# STATEWIDE COVID-19 CASES

Number of Consumers Reported as COVID-19  
Positive by Ethnicity





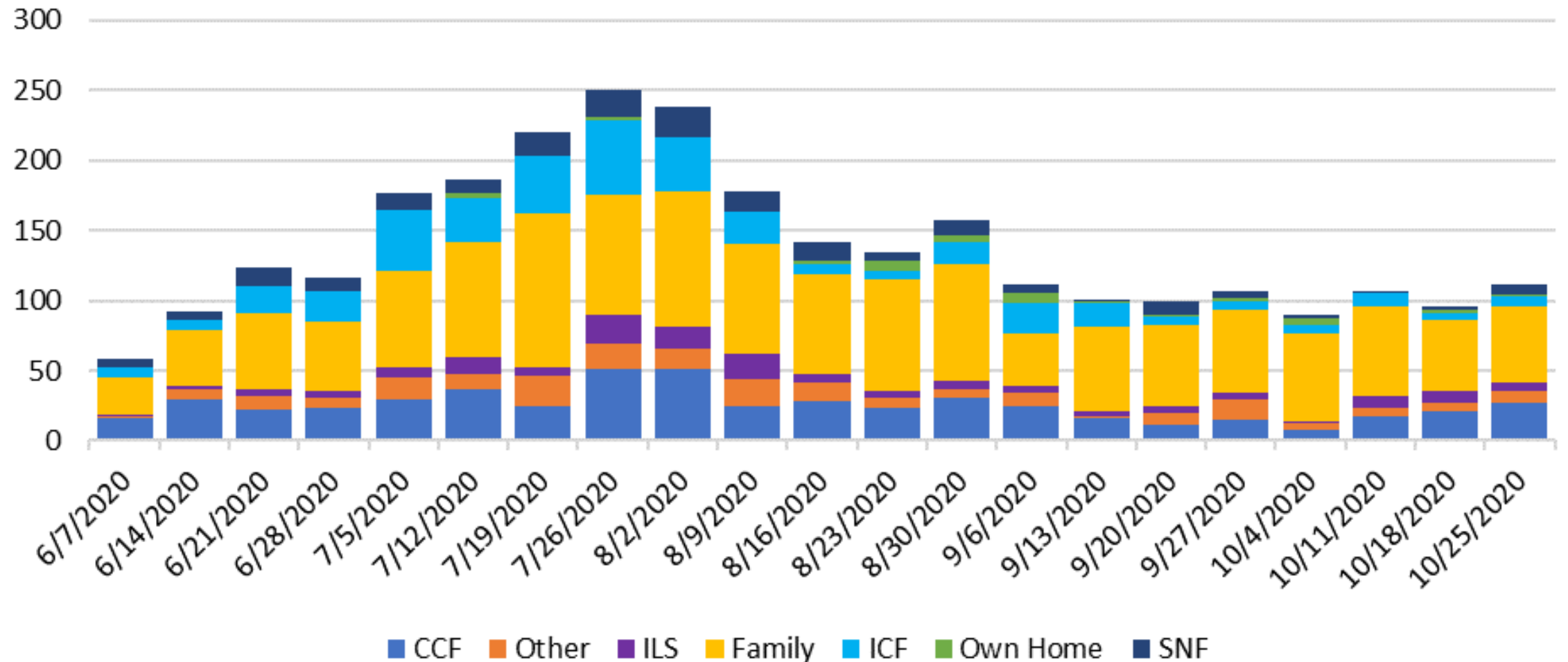
## RESIDENCE TYPE - STATEWIDE COVID-19 CASES

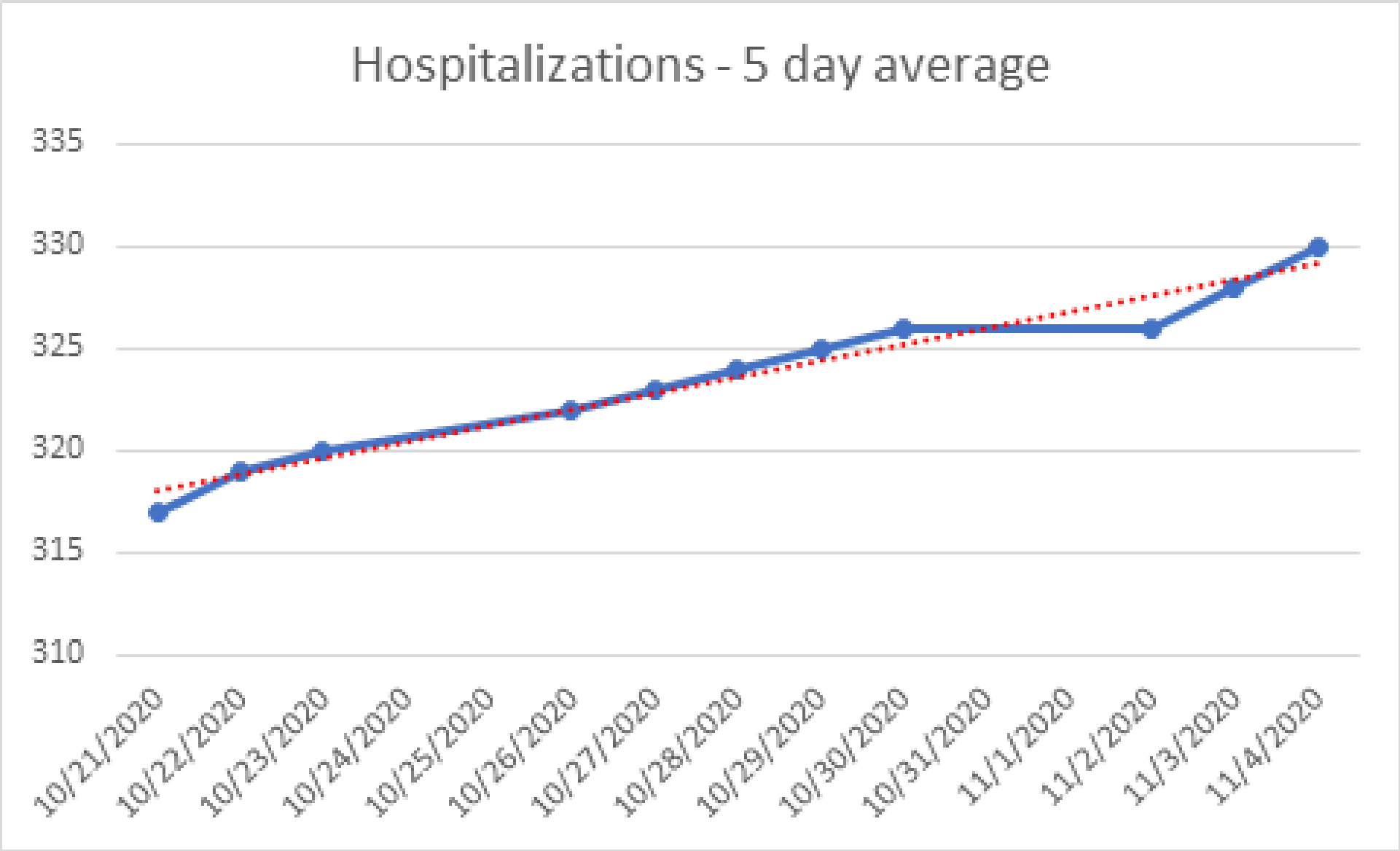


# STATEWIDE COVID-19 UPDATE (MARCH - OCTOBER)

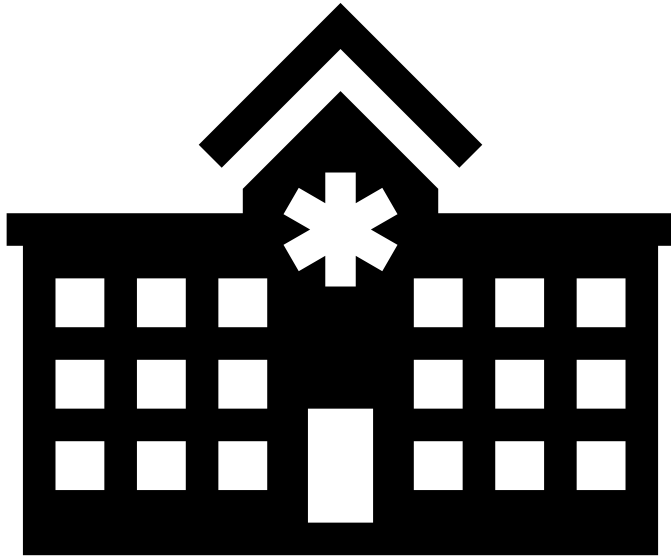


# RESIDENCE TYPE — STATEWIDE COVID-19 (JUNE — OCT.)





# VMRC — TOTAL COVID-19 DATA AS OF 10/30/20

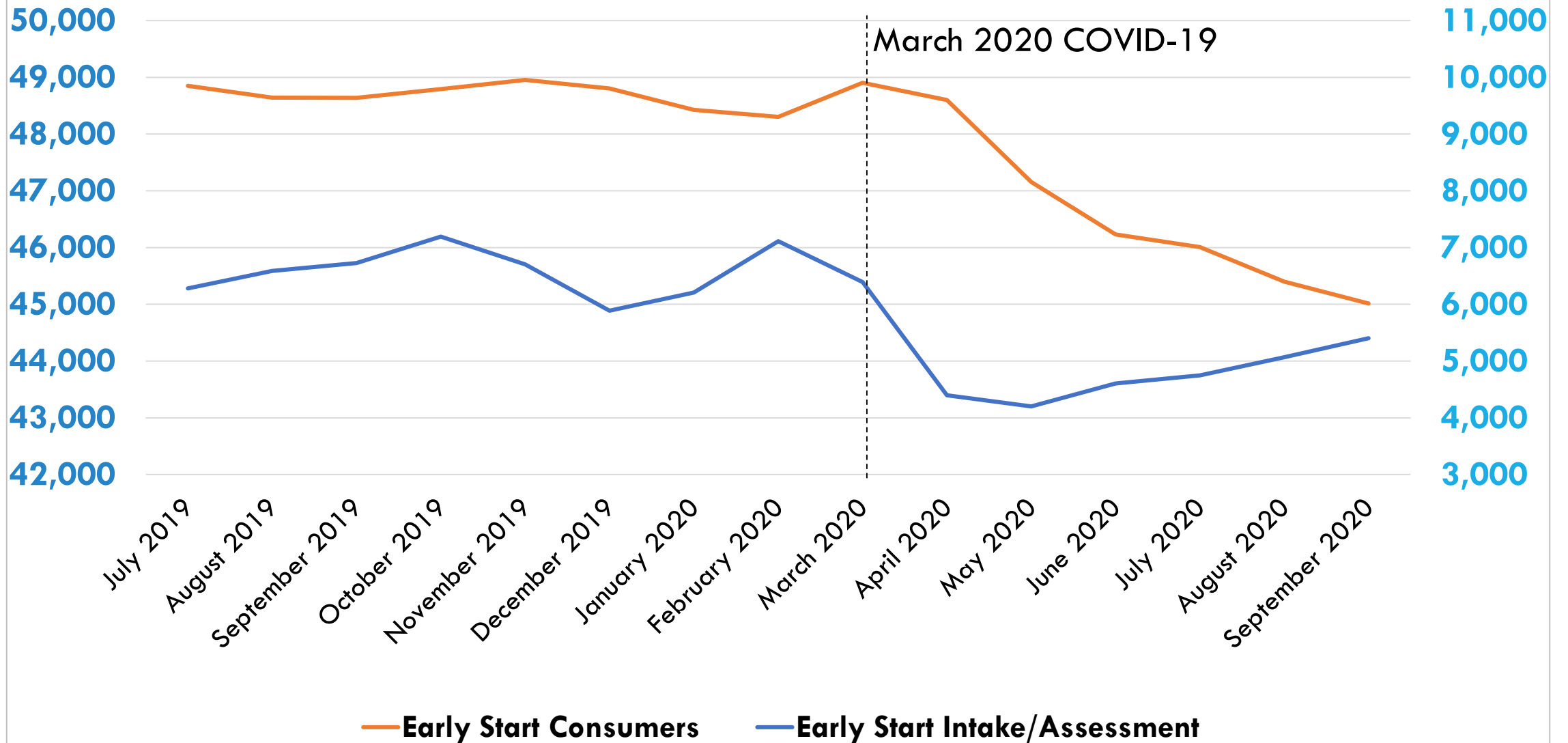


COVID-Positive: 189

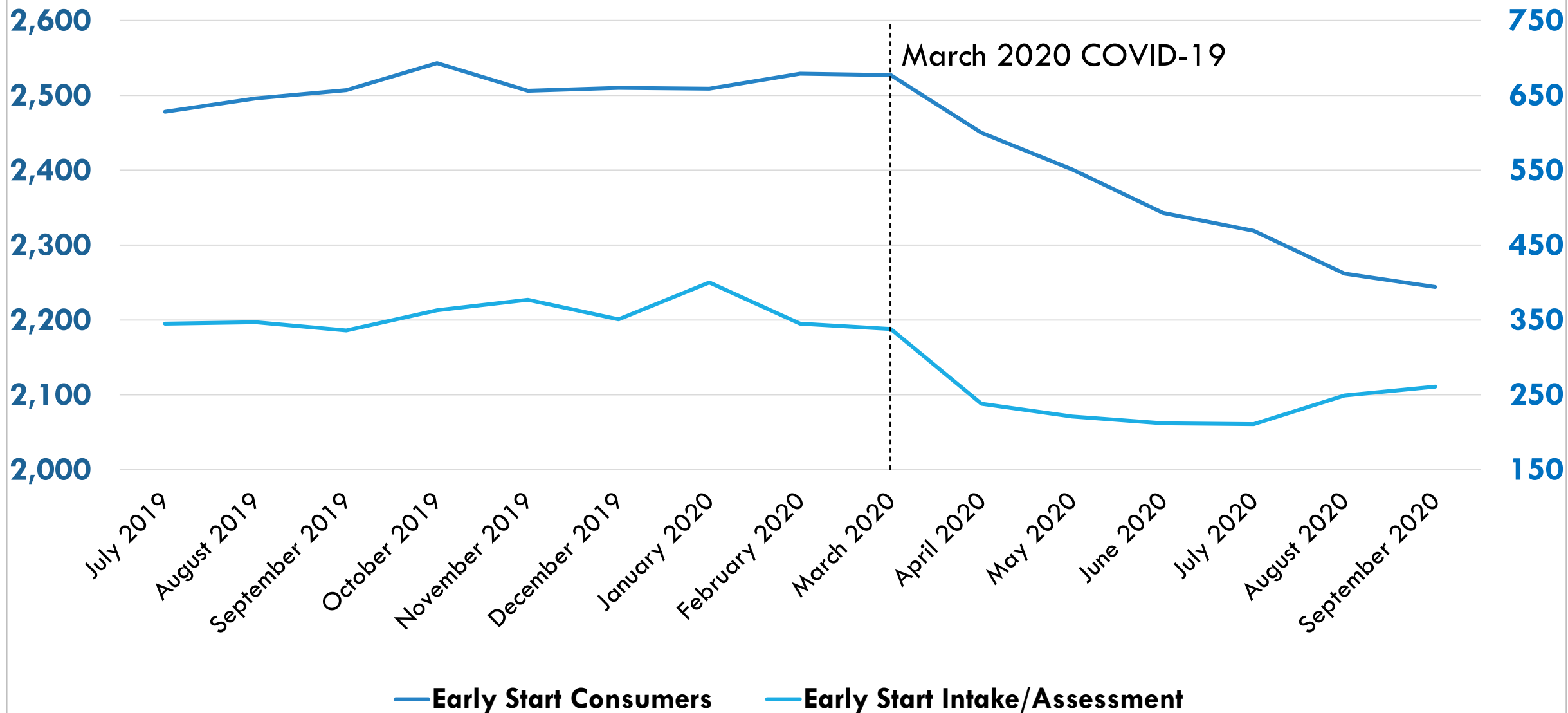
COVID-Positive Deaths: 14



## Statewide Number of Infants/Toddlers July 2019 through September 2020



## VMRC Number of Infants/Toddlers July 2019 through September 2020



# COVID-19 RESPONSE

LESSONS  
LEARNED

SAFETY

FLEXIBILITY

ALTERNATIVE  
SERVICES

COMMUNICATION

DATA &  
EVALUATION



## PPE DISTRIBUTED

Over 288,000 gowns

Over 870,000 gloves

Over 80,000 face shields

Over 1500 gallons of hand sanitizer

Over 3.9 million masks

# MASK CAMPAIGN

Submit photos to  
[DDSC19@dds.ca.gov](mailto:DDSC19@dds.ca.gov)

Photo release forms and more  
information available on the DDS  
website here:

<https://www.dds.ca.gov/corona-virus-information-and-resources/>  
under the “Mask Campaign” tab

Share your photos on Social Media  
using the hashtag  
#WearYourMaskDDS





# FRIENDS OF CHILDREN WITH SPECIAL NEEDS COVID-19 RESOURCES VIDEO



# COMMUNICATING DIRECTIVES & INFORMATION IN NEW WAYS

DDS Website (<https://www.dds.ca.gov/corona-virus-information-and-resources/>)

Plain language workgroup

Materials online in alternative languages & formats

- Videos featuring ASL
- Audio recordings
- Summaries of all directives

Zoom meetings

- More people can participate
- Allows for interpretation in different languages and closed captioning

# EARLY START BROCHURE

## ¿QUÉ ES EARLY START?

Es un sistema interagencial estatal de servicios coordinados de intervención temprana para bebés y niños pequeños que presentan discapacidades o retrasos del desarrollo o tienen riesgo de presentarlos y para sus familias. **Los centros regionales están abiertos y aceptan referidos para Early Start durante la pandemia de COVID-19.** Si sospecha que un bebé o niño pequeño tiene un retraso del desarrollo o un desarrollo atípico, entonces:

Evalúe	Refiera	Participe	Vea los resultados
<p>Un niño puede ser elegible para servicios de intervención temprana si:</p> <ul style="list-style-type: none"> <li>• Muestra un retraso en el desarrollo en una o más de las siguientes áreas: cognición, comunicación, desarrollo social o emocional, adaptativo o físico y motor, lo que incluye visión o audición;</li> <li>• Tiene una afección de riesgo establecida de etiología conocida, con una alta probabilidad de provocar un retraso en el desarrollo; o</li> <li>• Se considera en alto riesgo de presentar una discapacidad del desarrollo importante debido a una combinación de factores de riesgo biomédicos que son diagnosticados por personal calificado.</li> </ul>	<ul style="list-style-type: none"> <li>• Centros regionales locales <a href="https://www.dds.ca.gov/rc">https://www.dds.ca.gov/rc</a></li> <li>• Agencia de educación local <a href="http://www.cde.ca.gov/sp/se">http://www.cde.ca.gov/sp/se</a> (para niños que presentan únicamente discapacidades visuales, auditivas y ortopédicas de baja incidencia)</li> <li>• En un plazo de 45 días, el centro regional o la agencia de educación local: <ul style="list-style-type: none"> <li>◦ Asignarán un coordinador de servicios</li> <li>◦ Obtendrán el consentimiento de los padres</li> <li>◦ Programarán y completarán evaluaciones</li> <li>◦ Desarrollarán un Plan de Servicio Familiar Individualizado (IFSP, por su sigla en inglés) para desarrollar fortalezas y servicios</li> <li>◦ Proporcionarán servicios en el hogar o la comunidad</li> </ul> </li> <li>• Visite <a href="https://www.dds.ca.gov/services/early-start/what-is-early-start">https://www.dds.ca.gov/services/early-start/what-is-early-start/</a> para obtener más información sobre el proceso de referido.</li> </ul>	<ul style="list-style-type: none"> <li>• Colabore con los recursos de la comunidad en la planificación del tratamiento proporcionándoles comunicaciones por escrito;</li> <li>• Participe a través de llamadas de conferencia;</li> <li>• Asista a las reuniones de IFSP; o</li> <li>• Proporcione aportes y reciba comentarios del equipo de evaluación.</li> <li>• ¡Usted puede ser el vínculo entre las familias y el proceso de intervención temprana! Para obtener información sobre el apoyo familiar, visite el sitio web de los Centros de Recursos Familiares <a href="http://www.frcnca.org">http://www.frcnca.org</a>.</li> </ul>	<ul style="list-style-type: none"> <li>• Hay estudios que concluyeron que los niños que participan en programas de desarrollo de primera infancia/ intervención temprana de alta calidad tienden a tener: <ul style="list-style-type: none"> <li>◦ Menos necesidad de servicios de educación especial y otros servicios especializados;</li> <li>◦ Mejores destrezas de lenguaje;</li> <li>◦ Mejor nutrición y salud; y</li> <li>◦ Menos experiencia de maltrato y negligencia infantil.</li> </ul> </li> </ul>



Para obtener más información o si tiene preguntas sobre referidos a Early Start, comuníquese con la línea para bebés Early Start BabyLine al 1-800-515-BABY o envíe un correo electrónico a [EarlyStart@dds.ca.gov](mailto:EarlyStart@dds.ca.gov).

## WHAT IS EARLY START?

A statewide interagency system of coordinated early intervention services for infants and toddlers with or at risk for disabilities or developmental delay and their families. **Regional Centers are open and accepting referrals for Early Start during COVID-19.** If you suspect that an infant or toddler has a developmental delay or atypical development then:

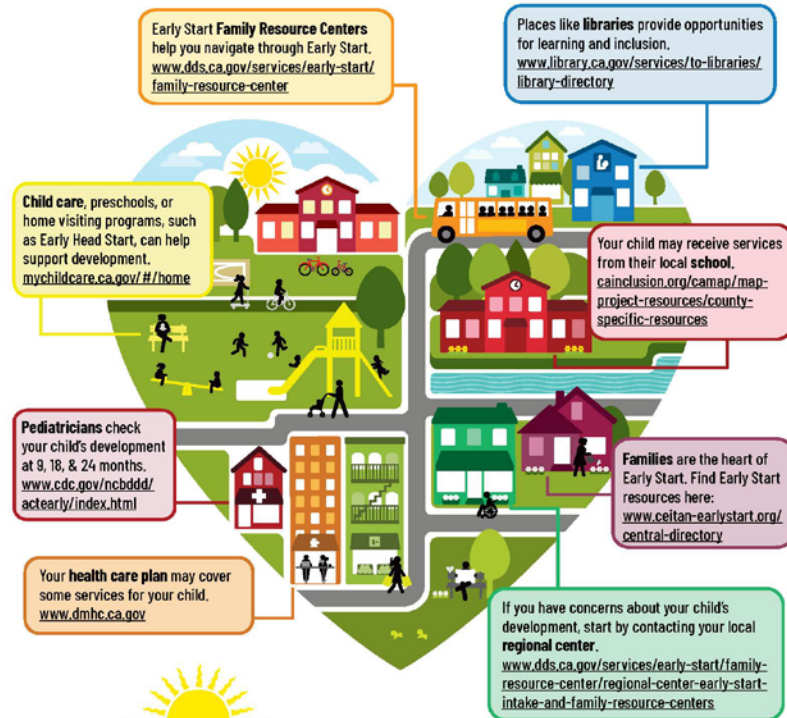
Screen	Refer	Get Involved	See Results
<p>A child may be eligible for early intervention services if they:</p> <ul style="list-style-type: none"> <li>• Show a developmental delay in one or more areas of cognitive, communication, social or emotional, adaptive, or physical and motor development, including vision or hearing;</li> <li>• Have an established risk condition of known etiology, with a high probability of resulting in delayed development; or</li> <li>• Are considered at high risk of having a substantial developmental disability due to a combination of biomedical risk factors that are diagnosed by qualified personnel.</li> </ul>	<ul style="list-style-type: none"> <li>• Local Regional Centers <a href="https://www.dds.ca.gov/rc">https://www.dds.ca.gov/rc</a></li> <li>• Local Educational Agency <a href="http://www.cde.ca.gov/sp/se">http://www.cde.ca.gov/sp/se</a> (for children with solely low incidence visual, hearing, and orthopedic disabilities)</li> <li>• Within 45 days, the regional center or local educational agency will: <ul style="list-style-type: none"> <li>◦ Assign a Service Coordinator</li> <li>◦ Obtain parental consent</li> <li>◦ Schedule &amp; complete evaluations</li> <li>◦ Develop an Individualized Family Service Plan (IFSP) to develop strengths and services</li> <li>◦ Provide services in home or community setting</li> </ul> </li> <li>• Go to <a href="https://www.dds">https://www.dds</a></li> </ul>	<ul style="list-style-type: none"> <li>• Collaborate with community resources in treatment planning by providing written communication;</li> <li>• Participate via conference call;</li> <li>• Attend IFSP meetings; or</li> <li>• Provide input and receive feedback from the assessment team.</li> <li>• You can be the link between families and the early intervention process! For information about family support, go to the Family Resource Centers website <a href="http://www.frcnca.org">http://www.frcnca.org</a></li> </ul>	<ul style="list-style-type: none"> <li>• Studies found that children who participate in high-quality early intervention/ early childhood development programs tend to have: <ul style="list-style-type: none"> <li>◦ Less need for special education and other specialized services;</li> <li>◦ Greater language abilities;</li> <li>◦ Improved nutrition and health; and</li> <li>◦ Experienced less child abuse and neglect.</li> </ul> </li> </ul>



# EARLY START INFOGRAPHIC

## The Early Start Community

If you have a young child who needs specialized care or has a disability, or if you have a concern about your child's development, there is help and support in your community!



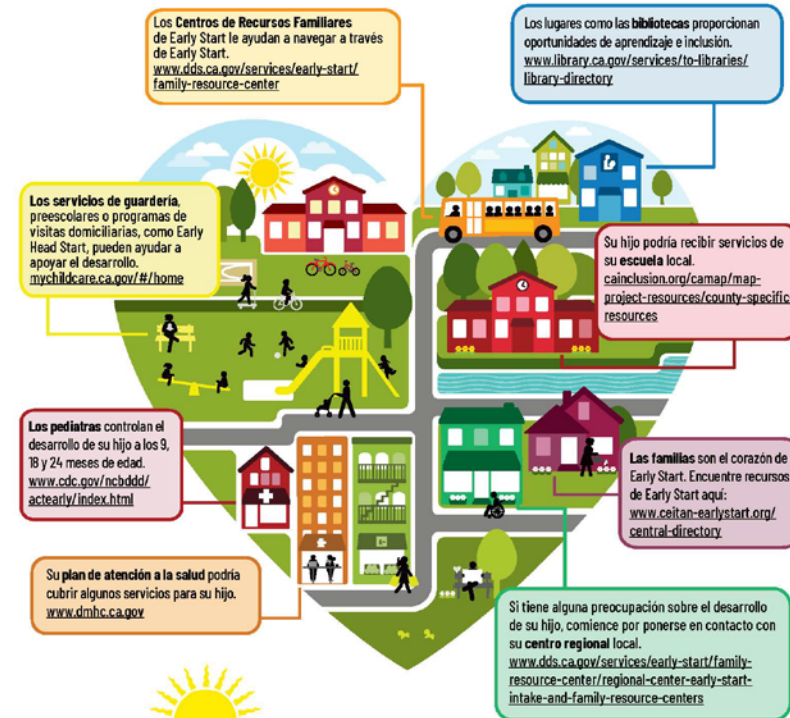
The California Department of Developmental Services and the Interagency Coordinating Council on Early Intervention have information for parents and professionals about how to get help and support. For additional questions, please call the Early Start BabyLine at 800-515-BABY (800-515-2229).

Local contact information:

Design created by Guthrie Devine at Eastern LA FRC.

## La comunidad de Early Start

Si tiene un niño pequeño que necesita atención especializada o tiene alguna discapacidad, o si le preocupa el desarrollo de su hijo, ¡hay ayuda y apoyo en su comunidad!



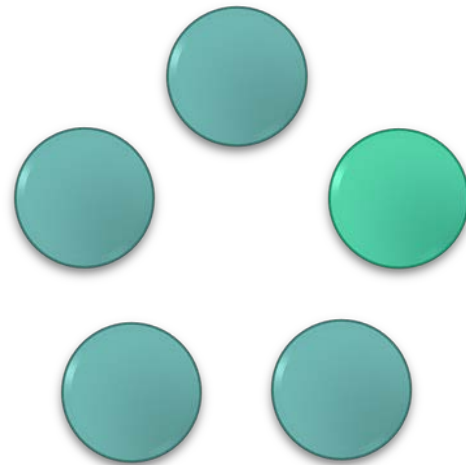
El Departamento de Servicios de Desarrollo de California y el Consejo de Coordinación Interagencial sobre Intervención Temprana tienen información para padres y profesionales sobre cómo obtener ayuda y apoyo. Si tiene más preguntas, llame a la línea para bebés Early Start BabyLine al 800-515-BABY (800-515-2229).

Información de contacto:

Diseño creado por Guthrie Devine en Eastern LA FRC.

# AUTISM SPECTRUM & AND EARLY START

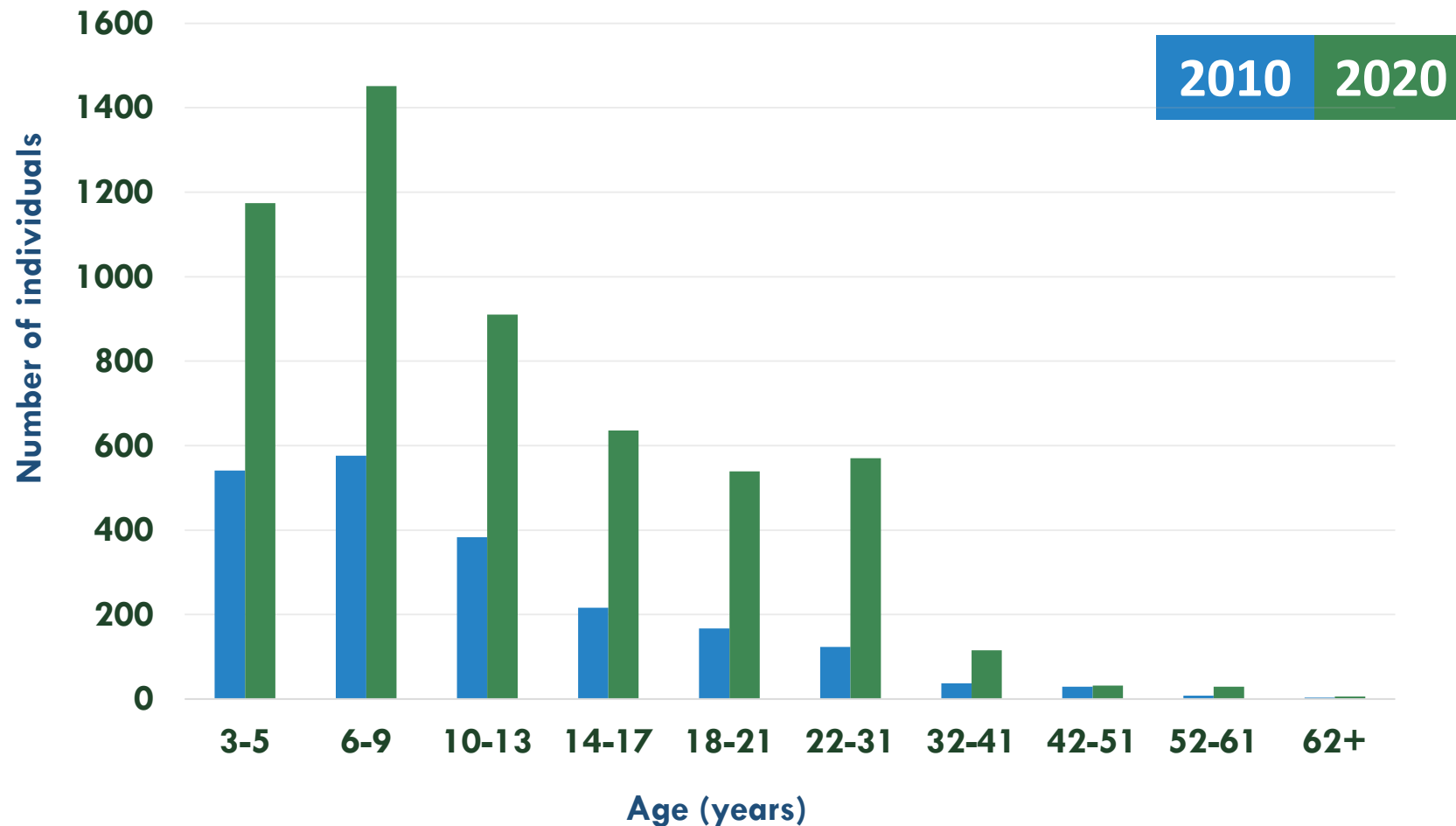
Approximately 20% of the children receiving Early Start services will likely be eligible for lifelong Lanterman Services (Status 2).



Of those who transition from Early Start to Lanterman Services, 58% are children with ASD

1 in 5 children in Early Start will require lifelong services through DDS

# VMRC ASD POPULATION OVER 10 YEARS



Source: CMF data for Status 1 and 2 consumers as of December 2010 and July 2020.



# PARTICIPANT-DIRECTED SERVICES

Participant-Directed Services available before COVID:

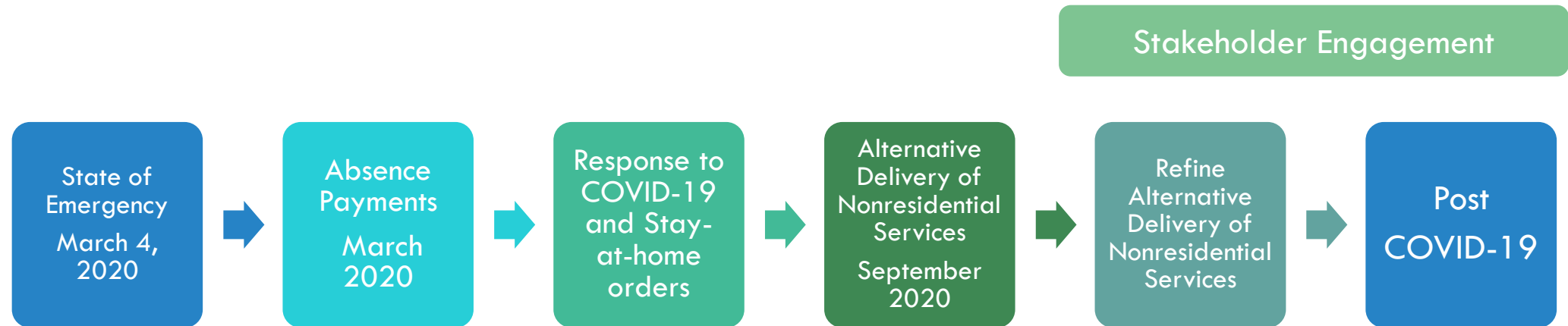
- Respite
- Day care
- Non-medical transportation
- Community-based training services
- Nursing
- These Participant-Directed Services will continue after COVID

COVID-19 Participant-Directed Services temporarily includes:

- Personal assistance
- Independent living skills
- Supported employment services

These services give individuals and families more options during COVID-19

# NONRESIDENTIAL SERVICES FRAMEWORK





# ALTERNATIVE SERVICE DELIVERY

## Non-residential Service Model

- Person-centered
- Gives flexibility
- Allows for creativity
- Limits potential exposure to COVID-19
- Preserves workforce and delivery of services
- Secures Federal Funding

# SELF-DETERMINATION MILESTONES

RC	Total Selected	Opted Out	Completed Orientation	Have an Individual Budget	Have a Spending Plan	Obtained an FMS	Started Services
VMRC	132	32	74%	44%	29%	31%	31
All RCs	3,324	1,123	84%	25%	16%	15%	355

# MOVING FORWARD

## Focus:

- COVID-19 Response
- Alternative Services
- Defining post COVID-19 Services
- Service Access and Equity
- SDP Implementation
- Participant Directed Services
- HCBS Compliance
- Children and Adolescents – High Risk